

## Corel PhotoCD Help Contents

Corel PhotoCD Lab lets you work with PhotoCD images. You can

- view images and modify their color, resolution, and size
- convert PhotoCD images to BMP, EPS, PCX, and TIF graphics formats
- create wallpaper for your screen
- create automatic and manual slide shows of images
- build and modify catalogs of information about your images

Help topics for Corel PhotoCD Lab are divided into five categories represented by the following icons:



Using Help



How to...



Commands



Glossary



Screen

## **How To**

[Set preferences for Corel PhotoCD Lab](#)

[Load images](#)

[Modify images](#)

[Convert images](#)

[Create a slide show](#)

[Create wallpaper](#)

[Save images](#)

[Work with catalogs](#)

[Exit Corel PhotoCD Lab](#)

## **Commands**

File menu

Image menu

Convert menu

Slide Show menu

Catalog menu

Preferences menu

Help menu

## Glossary

### - B -

bitmap

BMP

### - E -

view area

EPS

### - K -

PhotoCD

### - M -

menu bar

### - Q -

quiz mode

### - S -

snapshot

standard

### - W -

wallet

wallpaper

### - C -

caption mode

catalog

### - G -

grayscale

### - L -

large

### - P -

PCX

poster

### - R -

resolution

### - T -

TIF

title bar

**PhotoCD**

A process developed by the Eastman Kodak company that converts 35mm film negative or slides into digital format and stores them on a compact disc (CD).

**wallpaper**

An image that's displayed on your monitor as a background to other windows.

**resolution**

A term that refers to the number of pixels displayed per inch on your screen. The higher the resolution, the smoother your image will appear.

**bitmap**

An image composed of a series of dots (pixels).



**BMP**

The file name extension for Windows Bitmap files.

**caption mode**

An option you can set that displays the catalog description in the title bar for the current image.

**quiz mode**

An option you can set that displays the catalog description for the current image when you press **A**.

- ▶ If you specify quiz mode and you run an automatic slide show, the mode defaults to caption mode.

**catalog**

A database of information about your images.

**EPS**

The file name extension for Encapsulated PostScript files.

**PCX**

The file name extension for bitmap files created by paint programs such as CorelPhoto-Paint and PC Paintbrush.

**TIF**

The file name extension for Tag Image Format which is a bitmap graphic format.

**wallet**

A term that refers to a 128 x 192 pixel PhotoCD image.



**snapshot**

A term that refers to a 256 x 384 pixel PhotoCD image.

**standard**

A term that refers to a 512 x 768 pixel PhotoCD image.

**large**

A term that refers to a 1024 x 1536 pixel PhotoCD image.

**poster**

A term that refers to a 2048 x 3072 pixel PhotoCD image.

**title bar**

A component of the Corel PhotoCD Lab window that you can use to display the file name of the image loaded in the view area or displayed during a slide show.

**view area**

A component of the Corel PhotoCD Lab window that displays the loaded image and shows any modifications you make such as rotation or color changes.

**menu bar**

A component of the Corel PhotoCD Lab window that contains menus that you use to load, modify, and convert images, create wallpaper and slide shows, and work with catalogs.

**Loop checkbox**

Specifies whether you want the slide show run once or continuously.



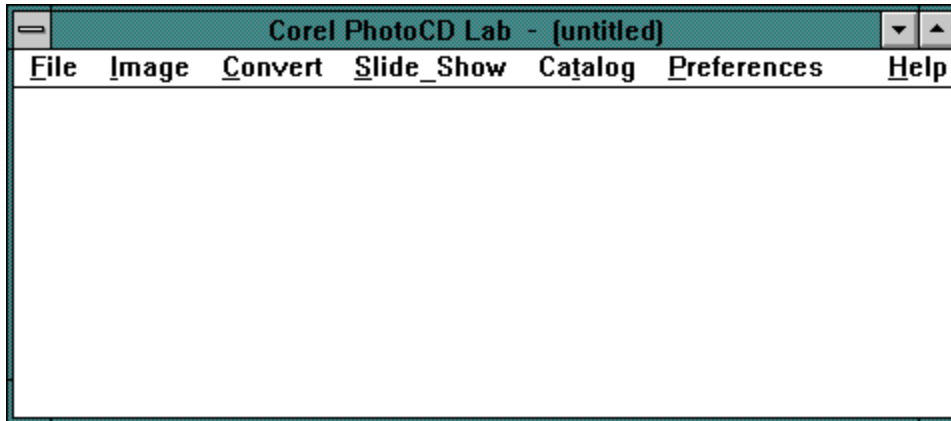
**Delay list box**

Indicates the length of time that you want each image displayed on the screen. By default, images are displayed for 1 second. You can specify from 0 to 600 seconds.

When you specify a delay, allow time for the image to load. For example, if you set the delay to 1 second and an image requires 5 seconds to load, the image is displayed for 5 seconds instead of 1 second.

## About the Corel PhotoCD Lab Window

You view and work with PhotoCD images in the Corel PhotoCD Lab window. The Corel PhotoCD Lab window looks like this:



- ◆ To exit Corel PhotoCD Lab, select **Exit** from the File menu.

## **Catalog menu**

- Build Catalog creates a database of information for a set of images.
- Import Catalog saves an existing catalog to a disk.
- Export Catalog restores an exported catalog from a disk to a hard drive.

## **Convert menu**

Saves one or more images using other graphics formats. You can specify new color, size, and view options for the converted image.

## **File menu**

- Open loads an image into the view area.
- Save As saves the image displayed in the view area using a new graphics format and any color, resolution, and rotation changes you specify.
- Wallpaper uses the image displayed in the view area as your screen background.
- Exit closes the Corel PhotoCD Lab window and prompts you to save any changes to the image in the view area, if necessary.

## **Image menu**

- Color changes the color of the image displayed in the view area.
- Size resizes the image displayed in the view area.
- View rotates and mirrors the image displayed in the view area.

## **Slide\_Show menu**

- Manual displays a slide show image on the screen until you press a mouse button to display another image.
- Automatic displays each slide show image on the screen for a specified length of time. Once the time has elapsed for one image, the next image is displayed.

## **Preferences menu**

Defines the following application settings:

- the image description options
- the background slide show and view area colors
- the type of music played during slide shows



## Help Menu

Contents

describes how to use Corel PhotoCD Lab.

About

provides product version information.

## Loading an Image

To open an image and display it in the view area, you must load the image. You can load any PhotoCD image, even if it doesn't use the extension "PCD", from any device connected to your system.

Once an image is loaded into the view area, you can work with it. Any modifications you make to the image are immediately displayed in the view area.

- ◆ To load an image
  1. Select **Open** from the File menu.
  2. Locate and select the image you want to load.
  3. Select **[OK]**.

## Modifying an Image

Once you've loaded an image into the view area, you can change its color, size, and rotation. You can also mirror the image.

- ◆ To modify the color of an image, select one of the following options from the Color sub-menu of the Image menu:

GrayScale

Palette

RGB 24-bit

- ◆ To modify the image size for viewing, select one of the following options from the Size sub-menu of the Image menu:

128 x 192

256 x 384

512 x 768

Fit to screen

- ◆ To rotate an image clockwise by 90 degree increments, select **Rotate +90 degrees** from the View sub-menu of the Image menu.
- ◆ To rotate an image counter-clockwise by 90 degree increments, select **Rotate -90 degrees** from the View sub-menu of the Image menu.
- ◆ To mirror an image, select **Mirror Image** from the View sub-menu of the Image menu.
- ◆ To undo all view options, select **Restore** from the View sub-menu of the Image menu.

**Grayscale**

Applies continuous tones to represent uniform shades of gray.

**Palette**

Applies either a range of 16 or 256 colors based on your selection.

**RGB 24-bit**

Provides 16 million colors if you're using a 24-bit video card.

**Fit to screen**

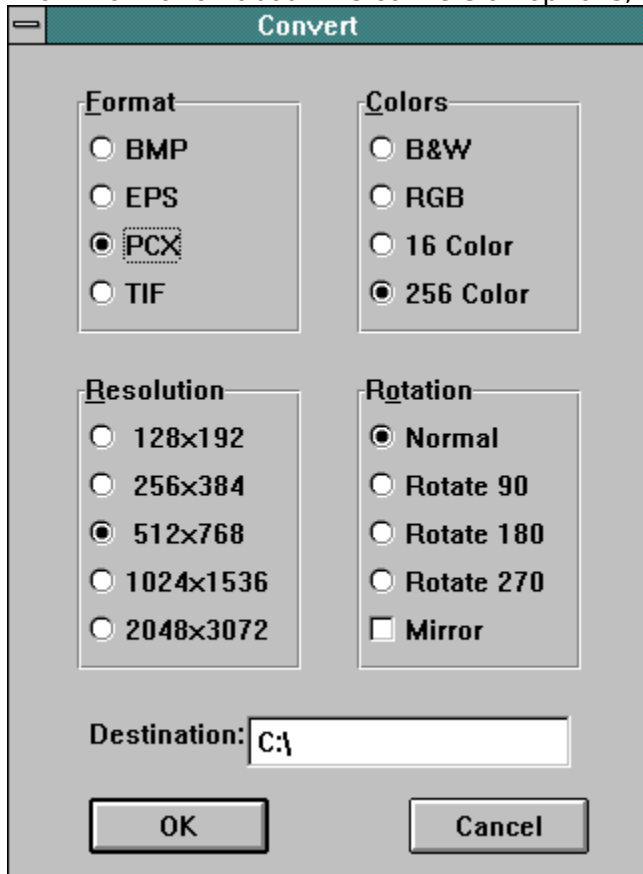
Resizes the image to the largest and best possible fit on the screen.

## Converting Images

Corel PhotoCD Lab lets you convert one or more PhotoCD images and store the new images in a location you specify. You can convert PhotoCD images to new formats, colors, resolutions, and rotations.

► Ensure that files on the destination location don't use the same names as files you're converting. Corel PhotoCD Lab doesn't stop the conversion to warn you about duplicate files.

For information about the conversion options, select areas of this conversion window:



- ◆ To convert one or more images
  1. Select Convert.
  2. Specify the conversion options.
  3. Select **[OK]**.
  4. Locate and select the images you want to convert.
  5. Select **[OK]**.
- ◆ To stop the conversion, press any key.



### **Selecting File Names**

- ◆ To select consecutive file names, select the first file name and drag your mouse.
- ◆ To select non-consecutive file names, press **Ctrl** and choose the file names.

**format**

Lets you choose the format for the converted images: BMP, EPS, PCX, or TIF.

**color**

Lets you choose the color for the converted images: black and white (B&W), RGB, 16 color, or 256 color.

**resolution**

Lets you choose the resolution for the converted images: 128x192, 256x384, 512x768, 1024x1536, and 2048x3072.

**rotation**

Lets you choose the rotation and mirror options for the converted images.

**Destination text box**

Specifies the location where you want the converted image stored.

## Creating Slide Shows

Corel PhotoCD Lab lets you create a slide show of PhotoCD images. You can include any PhotoCD image, even if it doesn't use the extension "PCD".

You can create both automatic and manual slide shows. Automatic slide shows display each image for a length of time that you specify when setting up the slide show. Once the time has elapsed for one image, the next image is displayed. Manual slide shows wait until you press a mouse button before displaying another image.

- ◆ To create a manual slide show
  1. Select **Manual** from the Slide\_Show menu.
  2. Choose an image you want to include in the slide show and select **[Add]** or double-click the image. Repeat this step until you've selected all the images you want to include in the slide show. The slide show will display images using the order in which you selected them.
    - or --
    - Select **[Add All]** to include in the slide show all the images listed.
  3. Indicate, by orientation, the types of PhotoCD images that you want the screen saver to display: landscape images only, portrait images only, or both landscape and portrait images.
  4. Select **[OK]**.
  5. Press the right-mouse button to advance to the next image.
    - or --
    - Press the left mouse button to return to the previous image.
- ◆ To create an automatic slide show
  1. Select **Automatic** from the Slide\_Show menu.
  2. Specify the loop and delay options.
  3. Select **[OK]**.
  4. Choose an image you want to include in the slide show and select **[Add]** or double-click the image. Repeat this step until you've selected all the images you want to include in the slide show. The slide show will display images using the order in which you selected them.
    - or --
    - Select **[Add All]** to include in the slide show all the images listed.
  5. Indicate, by orientation, the types of PhotoCD images that you want the screen saver to display: landscape images only, portrait images only, or both landscape and portrait images.
  6. Select **[OK]**.
- ◆ To stop a slide show, press **Esc**.

## Creating Wallpaper

Using Corel PhotoCD Lab, you can easily display a PhotoCD image as a screen background.

- ◆ To create wallpaper

1. Load the image into the view area and apply any modifications you require.
2. Select **Wallpaper** from the File menu.
3. Select size that you want the image displayed on your screen.

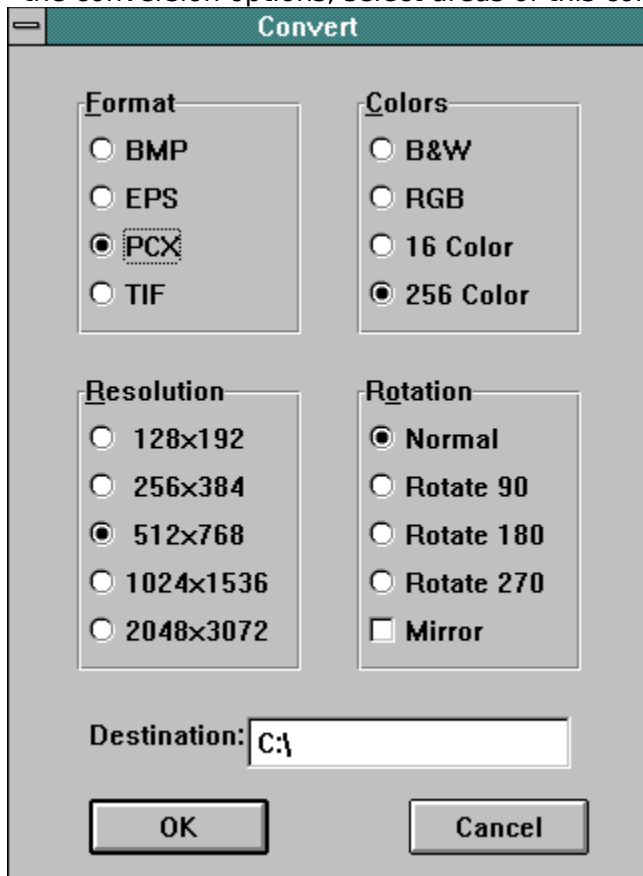
- ▶ You can select a size that's larger than your screen. However, to select the 1024x1536 size, you must have a screen size of at least 1024x768. If you choose this option, the image may take significantly longer to load because of the large amount of memory required.

4. Mark the Tile Wallpaper checkbox if you want multiple images of the wallpaper displayed.
5. Select **[OK]**. If the name of the file you're using exists, you're prompted to confirm that you want to overwrite the file.



## Saving Images

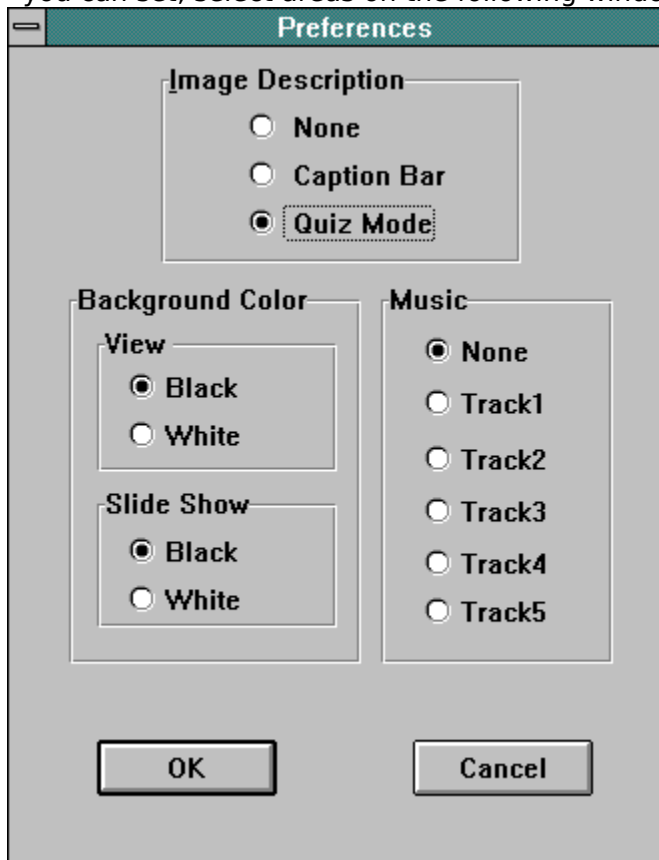
You can save an image that's displayed in the view area using a new format. You can specify the color and rotation you want applied to the saved image. For information about the conversion options, select areas of this conversion window:



- ◆ To save an image that's displayed in the view area
  1. Select **Save As** from the File menu.
  2. Select the conversion options.
  3. Select **[OK]**. If the name of the file you're using exists, you're prompted to confirm that you want to overwrite the file.

## Setting Preferences

You can customize preferences for Corel PhotoCD Lab. For information about the options you can set, select areas on the following window:



- ◆ To set preferences
  1. Select **Preferences** from the File menu.
  2. Mark the options.
  3. Select **[OK]**.

**image description**

Specifies whether catalog descriptions are displayed and how they're used. If you use catalog descriptions, you can specify caption mode or quiz mode.

**background color**

Determines whether black or white is used as the background color in the view area and the slide shows.

**music**

Specifies whether music is played during the slide show. You can specify five different types of music. Music is available for Corel Professional Photos only.

## Working with Catalogs

Each Corel Professional Photo CD includes a catalog which defines a description for each image on the CD. When you're using Corel PhotoCD Lab, the description is displayed in the title bar when you're using caption mode and in a pop-up dialog box when you're using quiz mode.

You can modify the catalog provided with your Corel Professional Photo CD and create catalogs for other CDs that you use. By default, catalogs are saved to your hard disk.

If you want to use the catalog on another system, you must export the catalog. The information is saved to a disk that you specify. You can then import the catalog from the disk to another system.

- ◆ To create a catalog

1. Select **Build Catalog** from the Catalog menu.
2. Choose the files you want to include in the catalog.
3. Select **[OK]**.
4. Enter a description for the image.

- ▶ You can erase all the entries in the current catalog using **[Erase]**.

5. Select **[OK]**.
6. Repeat Steps 4 and 5 for each image you've included in the catalog.

- ◆ To export a catalog

1. Select **Export** from the Catalog menu.
2. Select the catalog you want to export.
3. Indicate the letter of the drive to which you want the catalog saved.
4. Select **[OK]**.

- ◆ To import a catalog

1. Select **Import** from the Catalog menu.
2. Select the catalog you want to import.
3. Select **[OK]**.
4. If the catalog exists on the hard drive, you're prompted to confirm that you want to overwrite the existing catalog. Select **[Yes]**.

